

VICINITY MAP  
SCALE: 1"=500'

- REFERENCES:
- (1) DEEDS SHOWN HEREON.
  - (2) MECKLENBURG COUNTY GIS SYSTEM.
  - (3) PLAT ENTITLED "PROPERTY OF F. .D. ALEXANDER LAND CO." BY C. G. HUBBKE CIV. ENG. DATED MAY 1907 AND RECORDED IN MAP BOOK 332 PAGE 6 MECKLENBURG COUNTY REGISTER OF DEEDS.
  - (4) PLAT ENTITLED "WASHINGTON HEIGHTS" BY BLAIN AND DRAWZ ENGINEERS AND DATED JUNE 10, 1913 AND RECORDED IN MAP BOOK 230 PAGE 228 MECKLENBURG COUNTY REGISTER OF DEEDS.
  - (5) PLAT ENTITLED " BEATTIES FORD ROAD WIDENING MAP 1" BY ESP ASSOCIATES, P.A., DATED 12, 1997 AND RECORDED IN MAP BOOK 29 PAGE 44 MECKLENBURG COUNTY REGISTER OF DEEDS.
  - (6) AS BUILT PLANS BY CHARLOTTE MECKLENBURG UTILITIES ENTITLED "WATER MAIN REPLACEMENTS TO SERVE OAKLAWN PARK NEIGHBORHOOD" SHEETS 9 AND 10 OF 12.
  - (7) AS BUILT PLANS BY CHARLOTTE MECKLENBURG UTILITIES ENTITLED "PROP. WATER MAIN IMPROVEMENTS ALONG BEATTIES FORD ROAD" SHEET 1 OF 1.

- NOTES:
- (1) TRAVERSE ADJUSTED BY THE LEAST SQUARES ADJUSTMENT METHOD.
  - (2) AREAS DETERMINED BY COORDINATE COMPUTATIONS.
  - (3) ALL DISTANCES SHOWN ARE HORIZONTAL GROUND DISTANCE UNLESS OTHERWISE NOTED.
  - (4) CONTOUR INTERVAL IS ONE FOOT.
  - (5) HORIZONTAL POSITION LOCALIZED TO NCGS MON. "RESERVOIR". VERTICAL DATUM USED IS NGVD 88, ESTABLISHED BY GPS.
  - (6) AREA IS LOCATED IN ZONE X (AREAS OUTSIDE THE 0.2% ANNUAL CHANCE FLOOD PLAIN; AREAS OUTSIDE FUTURE CONDDITIONS 1% ANNUAL CHANCE FLOOD PLAIN) AS SHOWN ON F.I.R.M. PANEL 37119C0166E; EFFECTIVE DATE FEBRUARY 04, 2004.
  - (7) MEADE GUNNELL ENGINEERING & SURVEYING, P.C. HAS SHOWN THE LOCATIONS OF THE UNDERGROUND UTILITIES AS MARKED BY ON-TARGET UTILITY LOCATING SERVICE, INC. MEADE GUNNELL ENGINEERING & SURVEYING, P.C. RESPONSIBILITY IS FOR THE LOCATIONS OF THE MARKED UTILITIES, NOT THE MARKING OF THE UTILITIES THEMSELVES.

CERTIFICATE OF SURVEY AND ACCURACY

I, GLENN E. GAMBLE, CERTIFY THAT THIS PLAT WAS DRAWN UNDER MY SUPERVISION FROM AN ACTUAL SURVEY MADE UNDER MY SUPERVISION (D.B.K. AND PG. AS SHOWN); THAT THE ERROR OF CLOSURE BY LATITUDES AND DEPARTURES EXCEEDS 1:20000+-; THAT THE BOUNDARIES NOT SURVEYED ARE SHOWN AS BROKEN LINES PLOTTED FROM INFORMATION FOUND IN BOOK AS REFERENCED ON THIS PLAT; THAT THIS PLAT WAS PREPARED IN ACCORDANCE WITH G.S. 47-30 AS AMENDED.

WITNESS MY ORIGINAL SIGNATURE, REGISTRATION NUMBER AND SEAL.

GLENN E. GAMBLE \_\_\_\_\_ DATE \_\_\_\_\_  
NORTH CAROLINA PLS REGISTRATION NO. L \_\_\_\_\_

ABBREVIATIONS

ASPH	ASPHALT	PAVT	PAVEMENT	DW	DRIVEWAY	HORIZ	HORIZONTAL	W	VAULT WATER VAULT
B/C	BACK OF CURB	PERM	PERMANENT	ELEV	ELEVATION	LP	LIGHT POLE	WM	WATER METER
C/L FENCE	CHAIN LINK FENCE	PP	POWER POLE	ESMT	EASEMENT	MH	MAN HOLE	WV	WATER VALVE
C&G	CURB & GUTTER	PROP	PROPOSED	EXIST.	EXISTING	SW	SIDEWALK	NPS	NO POINT SET
CB	CATCH BASIN	PRPTY	PROPERTY	F/C	FACE OF CURB TEMP		TEMPORARY	SIP	SET IRON PIN
CONC	CONCRETE	RCP	REINFORCED CONCRETE PIPE	FH	FIRE HYDRANT V. GUTTER		VALLEY GUTTER	EIR	EXISTING IRON ROD
DI	DROP INLET	STD	STANDARD	GV	GAS VALVE	VERT	VERTICAL		

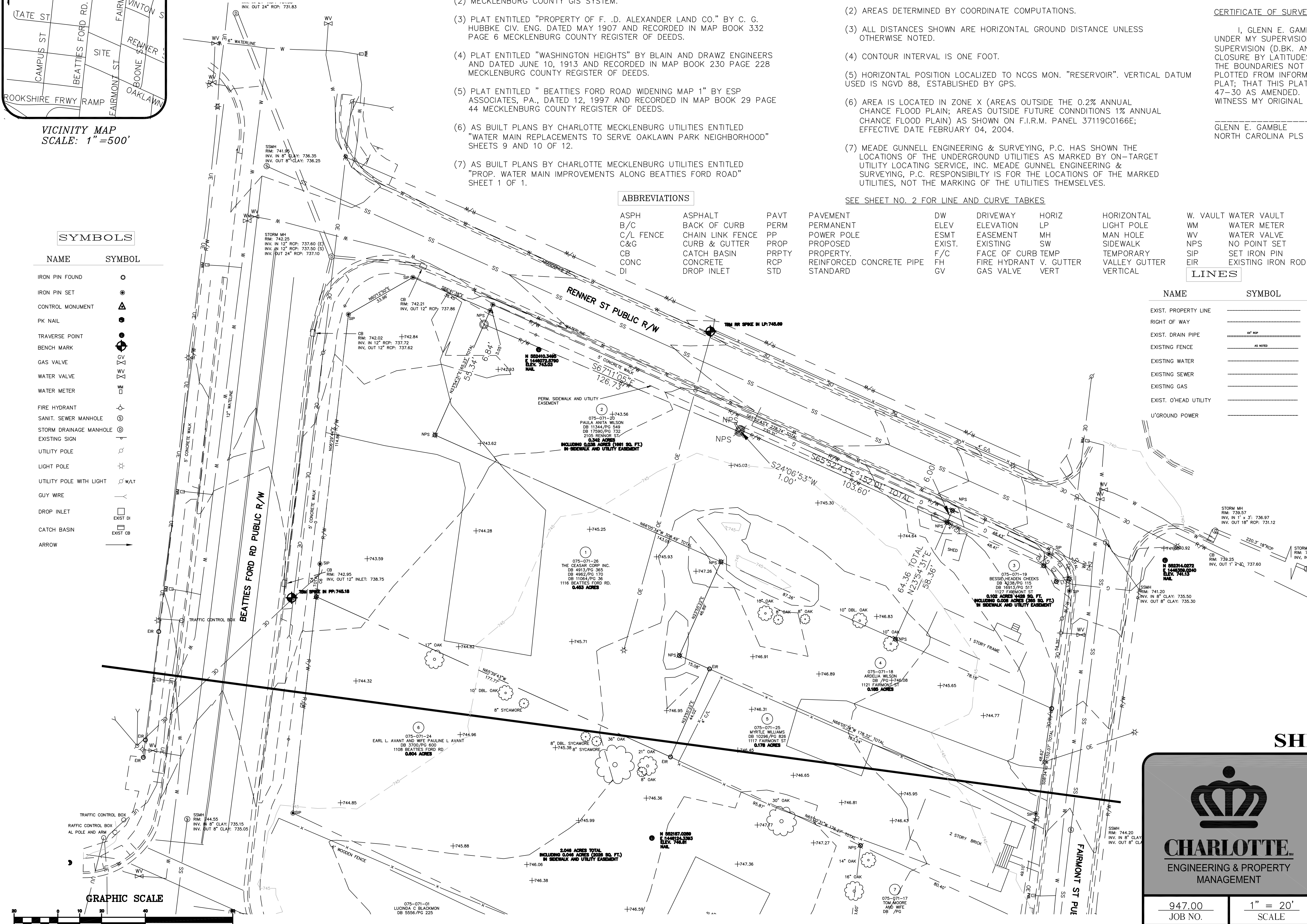
SEE SHEET NO. 2 FOR LINE AND CURVE TABKES

SYMBOLS

NAME	SYMBOL
IRON PIN FOUND	○
IRON PIN SET	⊙
CONTROL MONUMENT	△
PK NAIL	●
TRAVERSE POINT	⊙
BENCH MARK	⊕
GAS VALVE	⊕
WATER VALVE	⊕
WATER METER	⊕
FIRE HYDRANT	⊕
SANIT. SEWER MANHOLE	⊕
STORM DRAINAGE MANHOLE	⊕
EXISTING SIGN	⊕
UTILITY POLE	⊕
LIGHT POLE	⊕
UTILITY POLE WITH LIGHT	⊕
GUY WIRE	⊕
DROP INLET	⊕
CATCH BASIN	⊕
ARROW	→

LINES

NAME	SYMBOL
EXIST. PROPERTY LINE	—
RIGHT OF WAY	—
EXIST. DRAIN PIPE	—
EXISTING FENCE	—
EXISTING WATER	—
EXISTING SEWER	—
EXISTING GAS	—
EXIST. O'HEAD UTILITY	—
U'GROUND POWER	—



Prepared by:  
Meade Gunnell Engineering and Surveying, P.C.  
19810-A West Catawba Ave.  
Cornelius, NC 28031  
Tel: 704-655-7290  
Fax: 704-655-7291

SHEET 1 OF 3

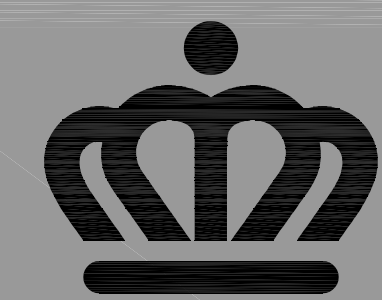
Project Name  
**CMPD METRO  
DIVISION OFFICE  
PROJECT**

Property Owners  
**As Noted**

Location  
**1100 BLOCK OF BEATTIES FORD RD.  
Charlotte, NC**

512-07-005  
PROJECT NO.

PATH



**CHARLOTTE**  
ENGINEERING & PROPERTY  
MANAGEMENT

947.00 JOB NO.	1" = 20' SCALE
GEG PREPARED BY	07/25/07 DATE

